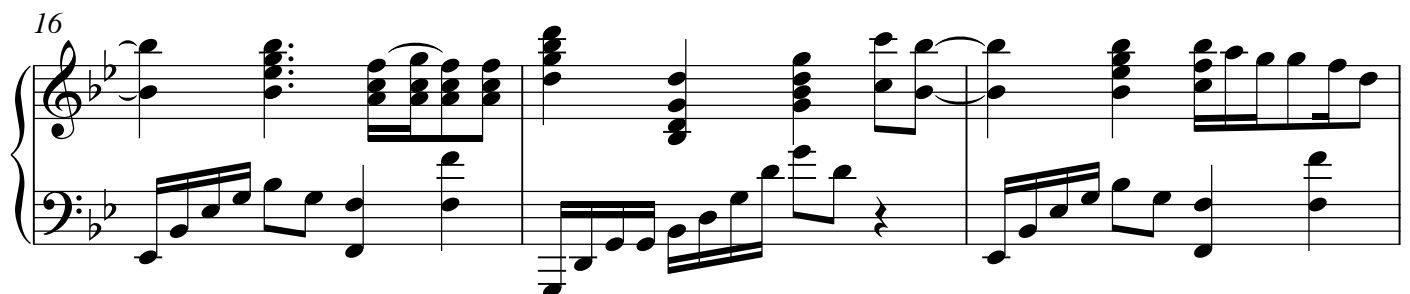
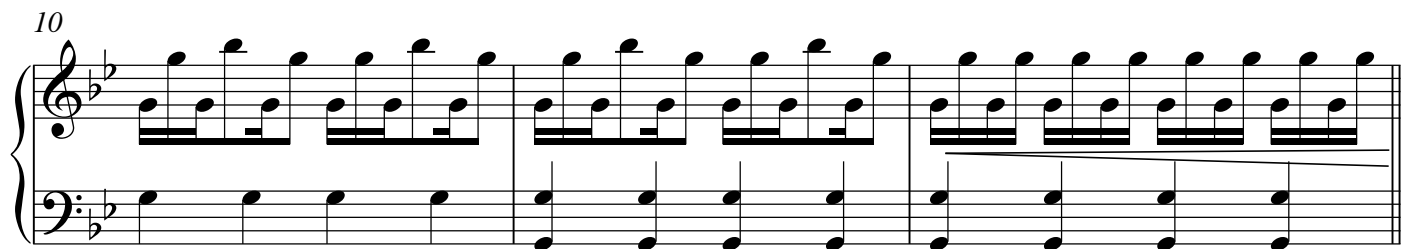
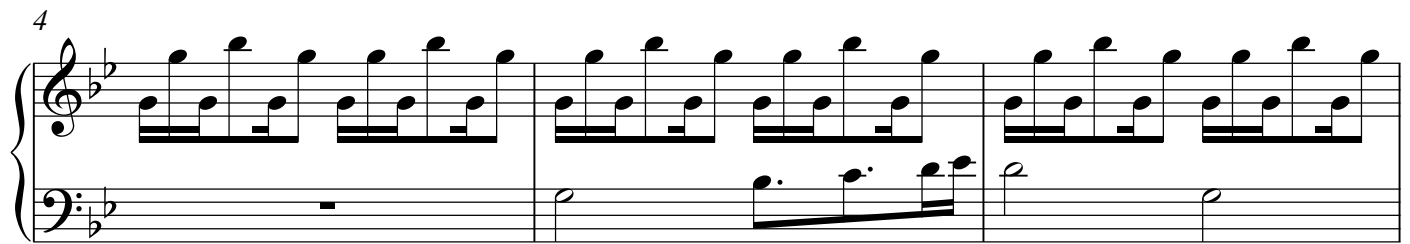
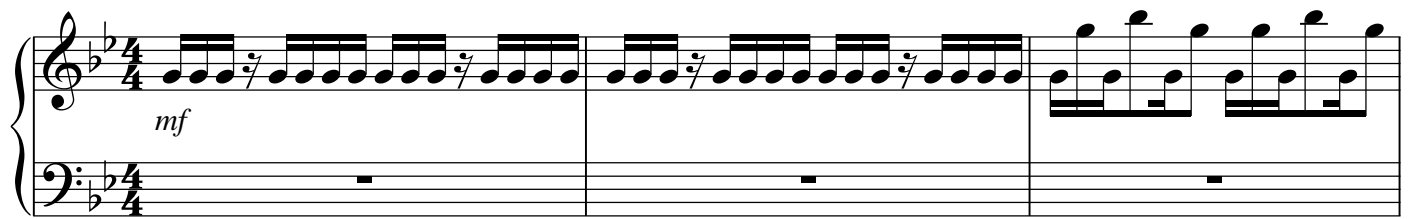


# Bangarang! - Skrillex feat. Sirah (Piano Cover)

Transcribed by: Bert Logar

arr: TheUnsungHeroine

$\text{♩} = 116$



22

Example 10

25

Example 1 (continued)

28

ff

34

This block contains measures 34, 35, and 36 of the musical score. Measure 34 features a treble staff with a melody of eighth and sixteenth notes and a bass staff with a simple accompaniment. Measure 35 continues the melody in the treble staff, with the bass staff providing harmonic support. Measure 36 concludes the phrase with a final cadence in both staves, marked by a double bar line and a repeat sign.

37

Measures 37-39. Treble clef: continuous eighth-note melody. Bass clef: simple accompaniment of quarter notes.

40

Measures 40-42. Treble clef: continuous eighth-note melody. Bass clef: simple accompaniment of quarter notes.

43

Measures 43-45. Treble clef: continuous eighth-note melody. Bass clef: triplet accompaniment.

46

Measures 46-48. Treble clef: continuous eighth-note melody. Bass clef: triplet accompaniment.

49

Measures 49-51. Treble clef: complex melody with many accidentals. Bass clef: simple accompaniment of quarter notes. Measure 49 starts with a forte (*ff*) dynamic marking.

52

Measures 52-54. Treble clef: continuous eighth-note melody. Bass clef: simple accompaniment of quarter notes. Measure 52 starts with a mezzo-forte (*mf*) dynamic marking.

55

Measures 55-57: Treble and bass staves in B-flat major. Measure 55 features a continuous eighth-note melody in the treble and a bass line with dotted rhythms. Measure 56 continues the eighth-note pattern. Measure 57 concludes with a half-note chord in the treble and a half-note in the bass.

58

Measures 58-60: Treble and bass staves. Measure 58 has a steady eighth-note melody in the treble and a bass line with dotted rhythms. Measure 59 continues the eighth-note pattern. Measure 60 ends with a half-note chord in the treble and a half-note in the bass.

61

Measures 61-63: Treble and bass staves. Measure 61 begins with a *ff* (fortissimo) dynamic and features a complex texture with chords and eighth-note runs. Measure 62 continues this texture. Measure 63 concludes with a half-note chord in the treble and a half-note in the bass.

64

Measures 64-66: Treble and bass staves. Measure 64 starts with a *f* (forte) dynamic and includes a repeat sign. Measure 65 continues the eighth-note melody in the treble and the bass line. Measure 66 ends with a half-note chord in the treble and a half-note in the bass.

67

Measures 67-69: Treble and bass staves. Measure 67 has a continuous eighth-note melody in the treble and a bass line with dotted rhythms. Measure 68 continues the eighth-note pattern. Measure 69 concludes with a half-note chord in the treble and a half-note in the bass.

70

rit. - - - - -

Measures 70-72: Treble and bass staves. Measure 70 continues the eighth-note melody in the treble and the bass line. Measure 71 continues the eighth-note pattern. Measure 72 concludes with a half-note chord in the treble and a half-note in the bass.